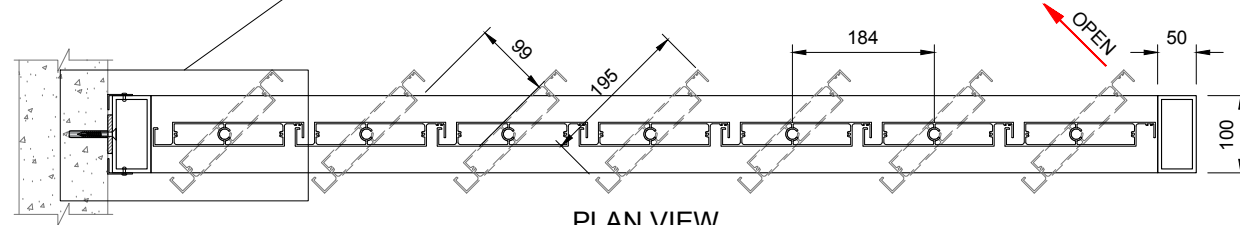
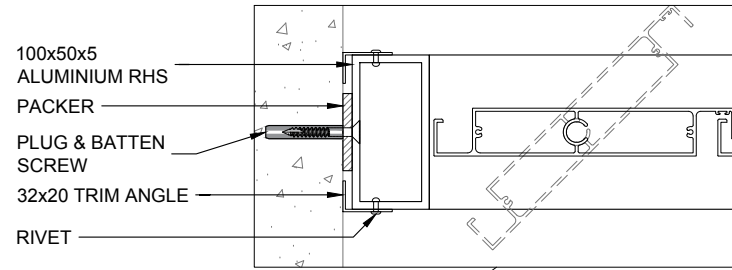
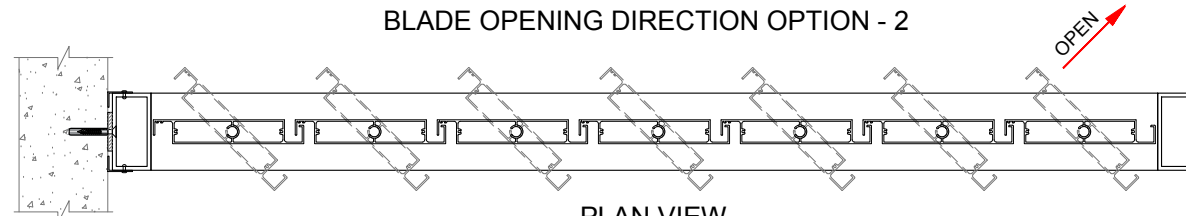


AEROTECH LINEAR 195 - VERTICAL PRIVACY SCREEN - SPECIFICATION

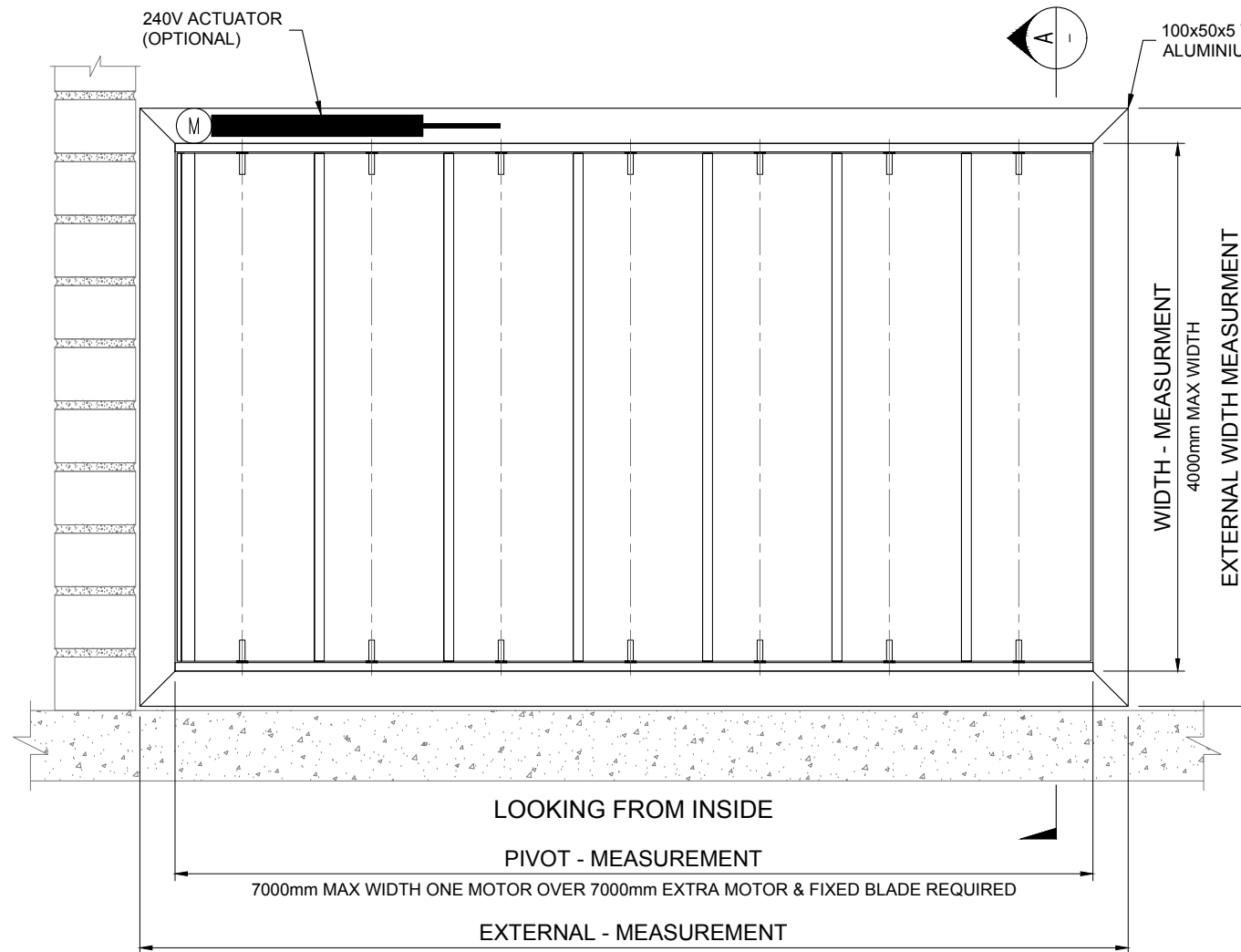
AEROTECH LINEAR 195 MODEL	
BLADE SPECIFICATIONS	
BLADE DESIGN	LINEAR
BLADE DIMENSIONS	195mm x 31mm x 3mm
BLADE MATERIAL	6016 EXTRUDED ALUMINIUM
BLADE FINISH	POWDER COATED OR ANODISED
BLADE CENTRES	184mm
BLADE OPENING	153mm
PIVOT SPECIFICATIONS	
PIVOT TRACK	12mm x 25mm x 3mm
PIVOT TRACK MATERIAL	6061 EXTRUDED ALUMINIUM
PIVOT TRACK FINISH	POWDER COATED OR ANODISED
DRIVE ANGLE SPECIFICATIONS	
DRIVE ANGLE	25mm x 25mm x 3mm
DRIVE ANGLE MATERIAL	6061 EXTRUDED ALUMINIUM
DRIVE ANGLE FINISH	POWDER COATED OR ANODISED
PARTS AND CONNECTOR SPECIFICATIONS	
PIN SET	8mm DIA 316 MARINE GRADE STAINLESS STEEL
SPRING SET	316 MARINE GRADE STAINLESS STEEL
CONNECTOR HOUSING	100% UV STABLE HARDENED NYLON INNER
WEATHER STRIP	PVC STORM INSERTION STRIP
MOTOR & CONTROL SPECIFICATIONS	
MOTOR TYPE	GERMAN MADE LINEAR 240V ACTUATOR
CONTROLS	HARD WIRED OR REMOTE OPERATION
SENSORS	RAIN, WIND & SUN SENSORS



PLAN VIEW
BLADE OPENING DIRECTION OPTION - 2



PLAN VIEW
BLADE OPENING DIRECTION OPTION - 1

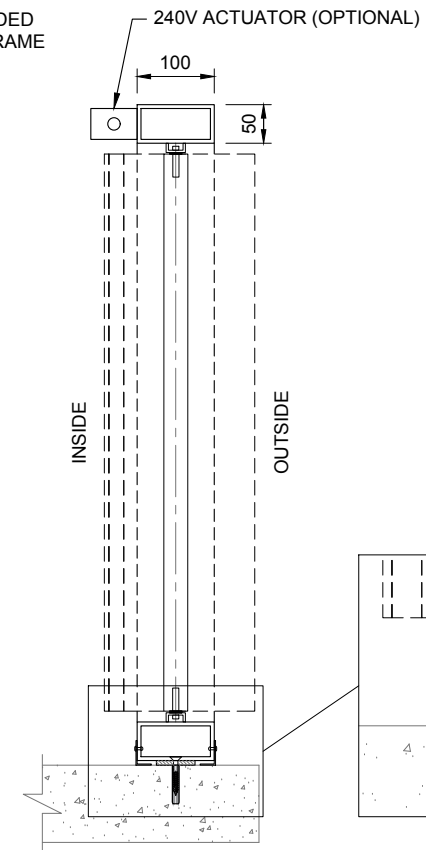


LOOKING FROM INSIDE

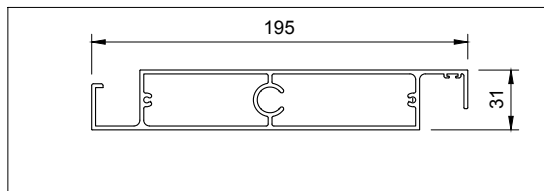
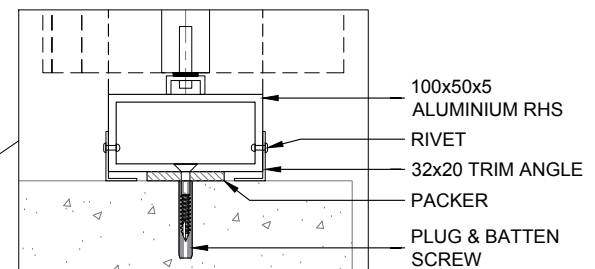
PIVOT - MEASUREMENT

7000mm MAX WIDTH ONE MOTOR OVER 7000mm EXTRA MOTOR & FIXED BLADE REQUIRED

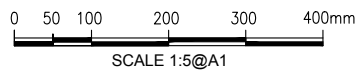
EXTERNAL - MEASUREMENT



VIEW - A
SCALE: 1:5@A1



195 LOUVRE BLADE DETAIL
SCALE 1:2 @A1



SCALE 1:5@A1

CLIENT DESIGN / MANUFACTURING APPROVAL:

I: _____
PRINT NAME SIGNATURE

APPROVED
 AMEND

REV	DATE	ISSUED FOR APPROVAL	DRN	APPR
A	11.05.16	ISSUED FOR APPROVAL	J.P	D.C



SYDNEY OFFICE:
2/410 Pittwater Rd
North Manly, NSW 2100 Australia

CLIENT:	DATE:	JOB No:
SPECIFICATIONS	11/05/2016	-
TITLE:	SCALE:	DRAWING No:
AEROTECH LINEAR 195 VIRTICAL PRIVACY SCREEN	1:5 @A1	SPEC - 09
CHECKED:	DRAWN:	ISSUE/REVISION:
D.CRABB	J.P	A